

Sign Design & Compliance Calculator

TABLE OF CONTENTS

| | |
|--|---|
| System Requirements | 2 |
| Installation | 2 |
| Running the Sign Design & Compliance Calculator for the First Time | 2 |
| Sign Design & Compliance Calculator Features | |
| Using the Keyboard..... | 3 |
| Text Boxes | 3 |
| Calculator | 3 |
| Entering Dimensions | 3 |
| Cut or Copy and Paste using the Windows Clipboard | 3 |
| Location of Project Files | 3 |
| Designing and or Checking a Sign | 4 |
| Basic Information Tab | 4 |
| Sign Details Tab | 5 |
| Support Details Tab | 6 |
| “Check” Button | 7 |
| All Digital (Paperless) Code Studies | 8 |
| Copyright Notice | 8 |
| Warranty and Limitation of Liability | 8 |

Sign Design & Compliance Calculator

System Requirements

In order to use the Sign Design & Compliance Calculator we recommend the following:

- Computer running Microsoft Windows
- Hard drive with at least 5 MB available
- Mouse
- Printer

Installation

Download the program from the online Account you created during the purchase checkout process.

Follow the prompts on the install dialog to install on your computer.



Running the Sign Design & Compliance Calculator for the First Time

The **User Information** screen below will be displayed upon start up.

The information fields must be filled out completely before you can continue.

The **Installation Code** you will be asked to input can be found either on one of the emails you were sent after purchasing the software or in your online account (that you created during Checkout when purchasing the software).

This information can be changed at a later time using the User Information tab. To change any of the default settings:

- Click the **User Information** tab
- Change information
- Click the **Save changes** button

Sign Design & Compliance Calculator Features

Using the Keyboard

- Pressing **Enter** will accept your selections and move cursor to the next field or screen.
- Pressing **Esc** will move the cursor back to the last field or screen.
- Pressing **Tab** will move the cursor to the next field or screen.
- Pressing **Shift+Tab** will move the cursor to the previous field or screen.

Text Boxes

When you are entering information into a text box, all standard editing capabilities are available, delete, insert, overwrite, etc. ***If you need to delete characters and type new ones in their place***, highlight the characters to be deleted first. You may do this by using your mouse to highlight the word or drag the mouse cursor over the characters with the left button pressed. Then type the new replacement characters. **Note:** You may also use this method to delete characters or words. Highlight characters/words to be deleted and press the Delete key.

Calculator

When numbers, such as dimensions and square footage, are required, a four function calculator is built into plan analyst. use the + for addition - for subtraction x or * for multiplication and / for division. Algebraic logic is used, i.e. division and multiplication are always done before addition and subtraction. There is no need to reach for your calculator.

Entering Dimensions

Dimensions may be entered using either decimals of a foot (10.4167) or by using the Feet_inches (10_5) format. For example, for 10 feet 5 inches, you enter either 10.4167 or 10_5.

Cut or Copy and Paste using the Windows Clipboard

Highlight the word or words that you want to move to or from Plan Analyst.

- ***To delete the highlighted words and copy them to the clipboard***, simply press Shift + Delete (at the same time).
- ***To copy the highlighted words to the clipboard***, simply press Ctrl + Insert or Ctrl + C (at the same time). Move the cursor to the new location.
- To place the selected text at the new location, press Shift + Insert or Ctrl+V (at the same time).

Location of Project Files

Plan Analyst creates a subdirectory called PROJECTS during the setup procedure. This is the default location for files, i.e. C:\Program Files (x86)\Ben Weese and Associates\Plan Analyst Sign Calculator\Projects

Designing and or Checking a Sign

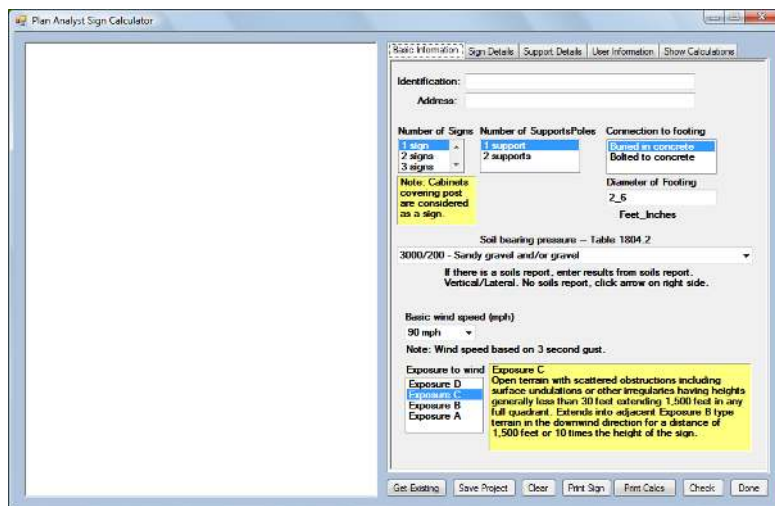
Simply fill in the forms provided to complete the sign description! *Plan Analyst will then complete all of the time-consuming calculations and create a detailed drawing of the sign.*

If you are designing a sign, you can quickly try different footing sizes, support sizes or types of material to determine the best sign design for the location. *You can have complete confidence in code compliance, preventing delays when the plans are submitted for approval.*

If you are checking the plans for code compliance, Plan Analyst will make the process faster and more efficient. Plan Analyst contains many different types of support material so there is no need to change software or the procedure you use when a project contains different types of material. *This makes the plan review process faster, easier and more accurate.*

Note: *The Sign Design & Compliance Calculator works for signs with 1 or 2 support poles.*

Basic Information Tab

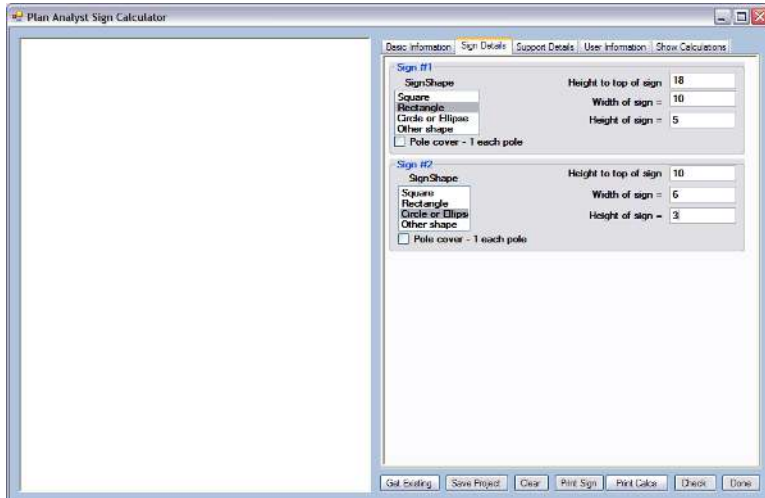


The screenshot shows the 'Plan Analyst Sign Calculator' software window. The 'Basic Information' tab is active. It contains several input fields and dropdown menus. The 'Identification' and 'Address' fields are empty. The 'Number of Signs' dropdown is set to '2 signs', 'Number of Supports/Poles' is set to '2 supports', and 'Connection to Footing' is set to 'Bolted to concrete'. The 'Diameter of Footing' is set to '2_6' feet. The 'Soil bearing pressure' is set to '3000/200 - Sandy gravel and/or gravel'. The 'Basic wind speed' is set to '90 mph'. The 'Exposure to wind' dropdown is set to 'Exposure C'. A yellow box highlights the 'Exposure to wind' section, explaining the conditions for Exposure C, D, B, and A.

1. First you enter the Identification and address information.
2. If you need to change the Number of signs, number of supports or condition at footing, click the correct one.
3. Enter the diameter of footing. **Note:** The calculator function is available.
4. For the Soil bearing pressure you may select from the list or enter results of the soils report.
5. For the Basic wind speed you may select from the list or enter the required basic wind speed.
6. For the exposure to wind you simply click the exposure that matches the wind exposure condition around the sign. The yellow box to the right explains the exposure condition.
7. When all of the information is entered, click the Sign Details tab.

Note: Use the User Information tab to change defaults.

Sign Details Tab



Shape and Size of Each Sign

Design each sign by choosing and entering the appropriate values:

- Select “Sign Shape”. **Note:** The input boxes on the right will change to match the sign shape you choose.
- Enter the height to the top of the sign from the ground level. **Note:** choosing “Other shape” requires the height to the centerline of the sign.
- Enter the width and height of the sign. Ellipse/Oval signs are created when the width and height are different.
- If you selected “Other shape” you will need to enter the area of the sign.

When all information is entered, click the Support Details tab.

Support Details Tab

The Support Details tab lets you define the Type and Size of Support.

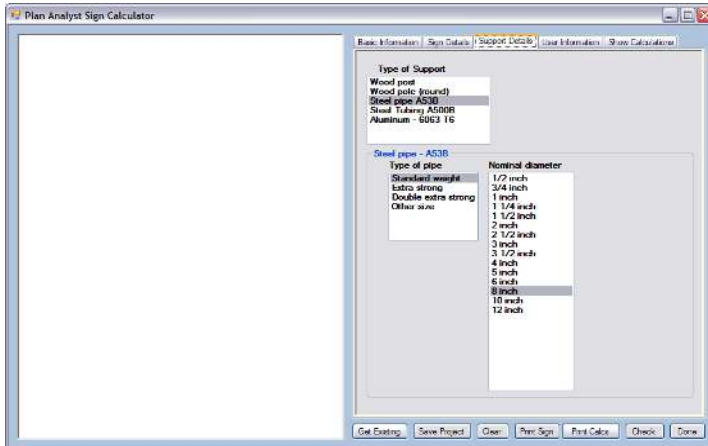
Simply highlight and click from the support material selection to define the type of support you are using. **Note:** The input information at the bottom will change based on the type of support selected. The following are examples of some of the materials available.

Steel pipe

Select the type of pipe and Nominal diameter size for standard steel pipes. Note: If you are using a size not listed, you may select Other Size and enter the exact dimensions.

Steel tubing

The input is very similar to standard steel pipes.

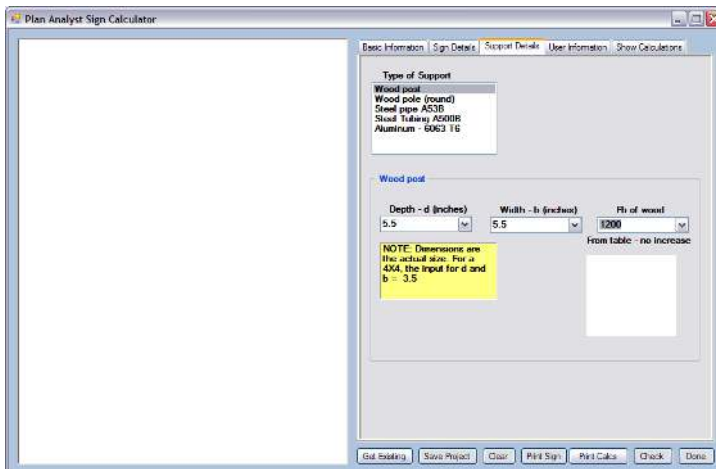


Wood post

- Enter the actual depth and width of the wood post in inches.
- Enter the Fb for the wood. **Note:** You may select from the list or enter the Fb if it is not on the list. See your lumber suppliers' information for the Fb for the wood that you are using.

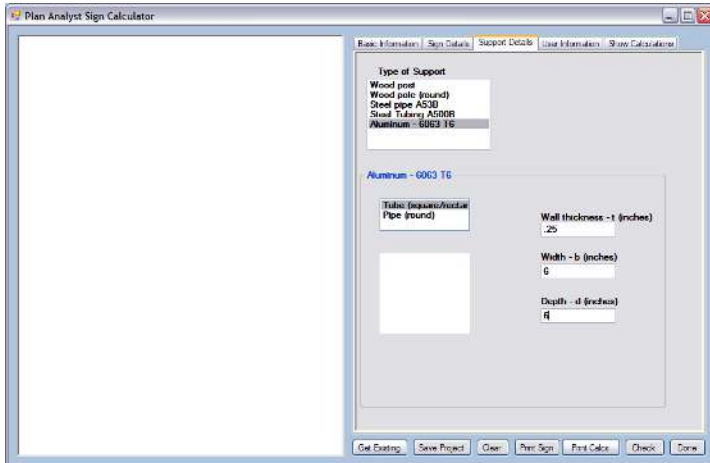
Wood pole

Input is very similar to wood post.



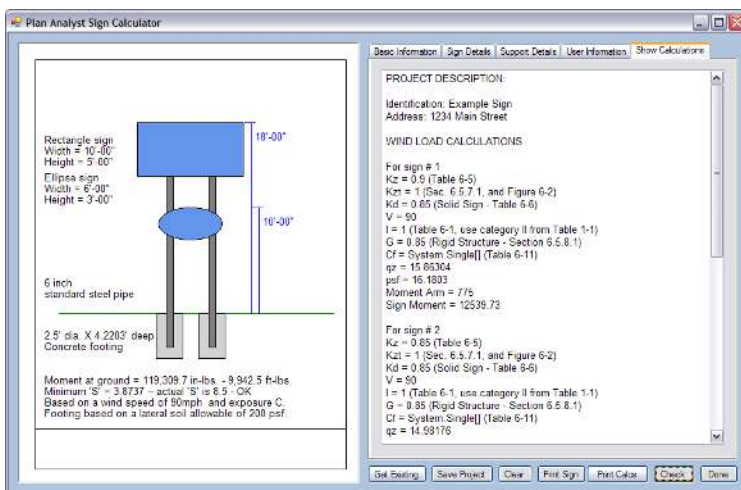
Aluminum

Select the shape and enter the required dimensions in inches.



“Check” Button

Once you have input the information prompted for your sign click the “Check” button. This checks the design and draws it (see below). **Note:** You may also view the calculations by clicking the show calculations tab.

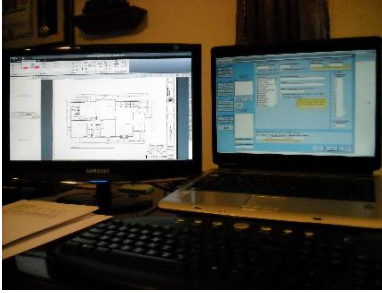


The process to check your sign is complete. You may now:

- Print the drawing.
- Save the sign description.
- Edit the signs, supports or footing information and click the check button (located at the bottom of the screen) to see the revised results instantly.

All-Digital (Paperless) Code Studies

Using the features of AutoDesk Design Review



What is needed?

- Computer with 2 monitors (1 for Plan Analyst, 1 for AutoDesk)
- Plan Analyst software
- AutoDesk Design Review software

Use the features of AutoDesk Design Review to get information (dimensions, square feet, etc) to enter information into Plan Analyst. As you create the correction report, copy and paste required corrections from Plan Analyst to the callout boxes in AutoDesk Design review. Using this system, you have reviewed the plans without handling the plans. This system speeds up the plan check process.

COPYRIGHT NOTICE

Interfaces, structure, sequence, software and organization are © 2021 Plan Analyst LLC. All rights reserved. No part or parts of this work covered by the copyrights hereon may be reproduced or distributed in any form or means, or stored in a database. Decompilation, reverse engineering, or any other unauthorized use of the software program or data contained herein is strictly prohibited without prior written consent.

WARRANTY AND LIMITATION OF LIABILITY

Plan Analyst LLC provides the accompanying software and information "AS IS", without representations or warranties of any kind regarding the use or the results of the use of the software or information. Plan Analyst LLC hereby disclaim and negate all express and implied warranties of any kind, including those regarding accuracy, completeness, merchantability or fitness for a particular purpose. In no event will Plan Analyst LLC be liable to licensee or any third party for any loss or injury caused in whole or in part by the use, manipulation, interpretation, delivery, accuracy or otherwise, of the software and information, and in no event will Plan Analyst LLC be liable to licensee or third parties for any indirect, consequential, special or punitive loss or damages, even if advised of the possibility of such loss or damage.